



MISSA
DE ANGELIS
(Mass VIII)

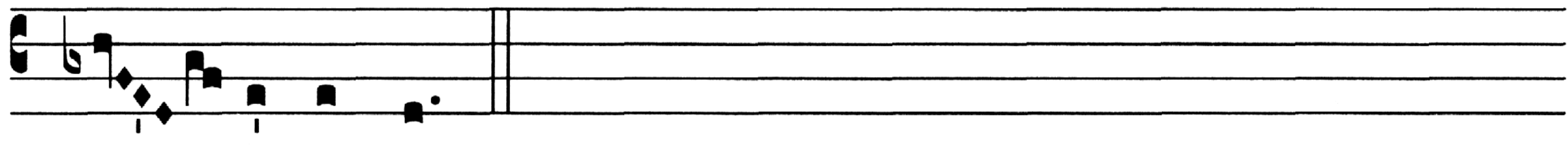
KYRIE 210

XV-XVI. cent.

v. 
K Y - ri - e * e - lé - i - son. (*bis*) Chri-


ste e - lé - i - son. (*bis*) Ký-ri - e


e - lé - i - son. Ký-ri - e * **


e - lé - i - son.

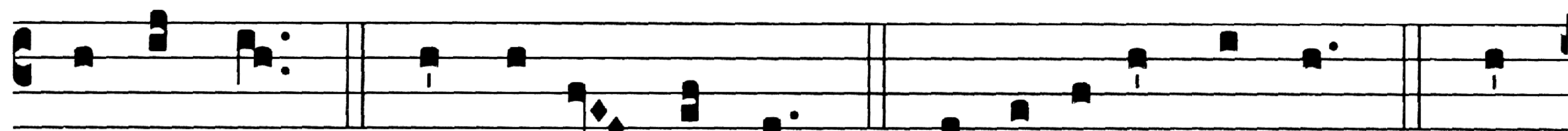
GLORIA 211

XVI. cent.

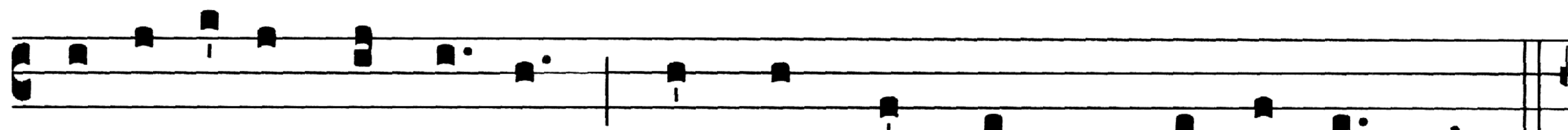
v. 
G Ló - ri - a in ex - cél - sis De - o. Et in ter - ra pax ho-


mi-ni-bus bo-nae vo-lun - tá - tis. Lau-dá - mus te. Be-ne-dí -

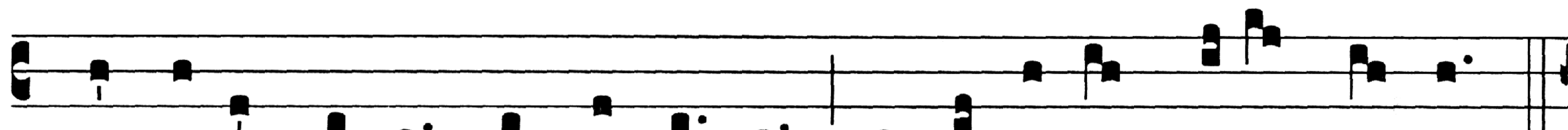
Missa de Angelis, Gloria



ci-mus te. A - do - rá - mus te. Glo - ri - fi - cá - mus te. Grá -



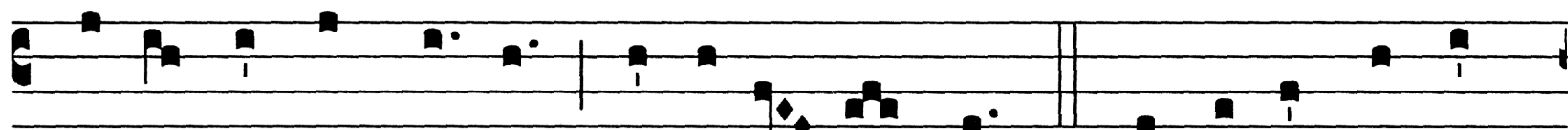
ti - as á - gi - mus ti - bi prop - ter mag - nam gló - ri - am tu - am.



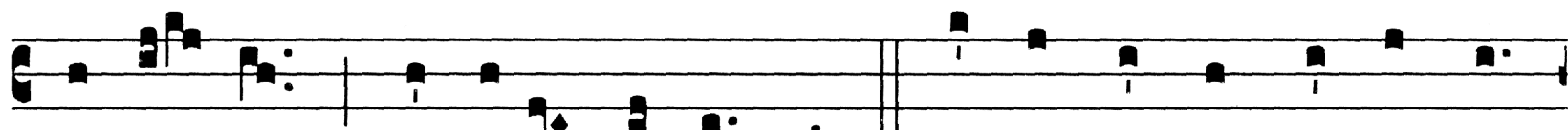
Dó - mi - ne De - us, Rex cae - lés - tis, De - us Pa - ter om - ní - po - tens.



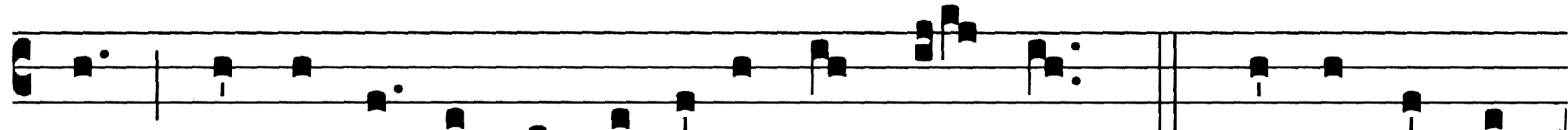
Dó - mi - ne Fi - li u - ni - gé - ni - te Ie - su Chri - ste. Dó - mi - ne



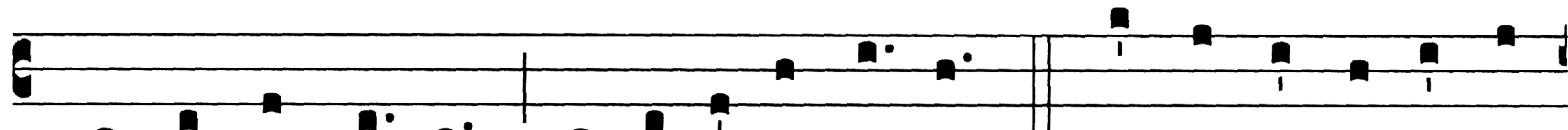
De - us, Ag - nus De - i, Fí - li - us Pa - tris. Qui tol - lis pec - cá -



ta mun - di, mi - se - ré - re no - bis. Qui tol - lis pec - cá - ta mun -

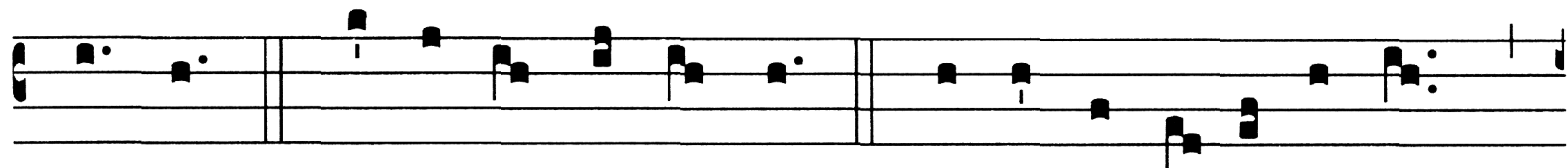


di, su - scí - pe de - pre - ca - ti - ó - nem nos - tram. Qui se - des ad



déx - te - ram Pa - tris, mi - se - ré - re no - bis. Quó - ni - am tu so - lus

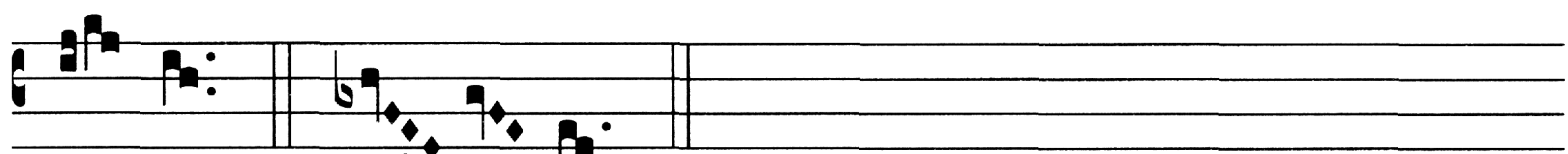
Missa de Angelis, Gloria



sanc- tus. Tu so- lus Dó- mi- nus. Tu so -lus Al -tís- si- mus,



Ie- su Chri- ste. Cum Sanc- to Spí- ri- tu, in gló- ri- a De- i

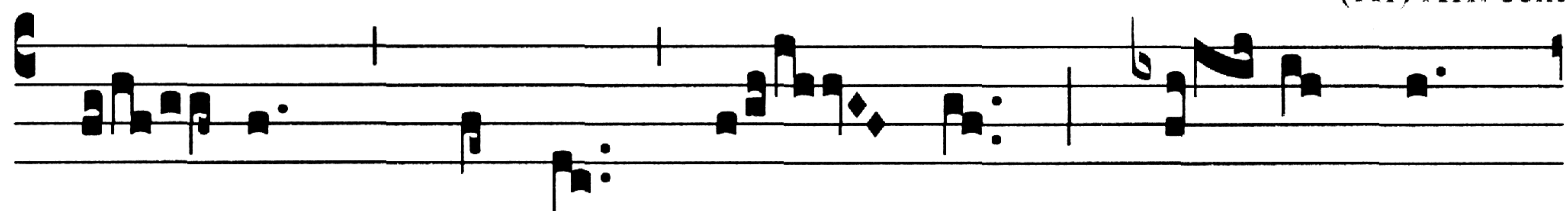


Pa - tris. A - men.

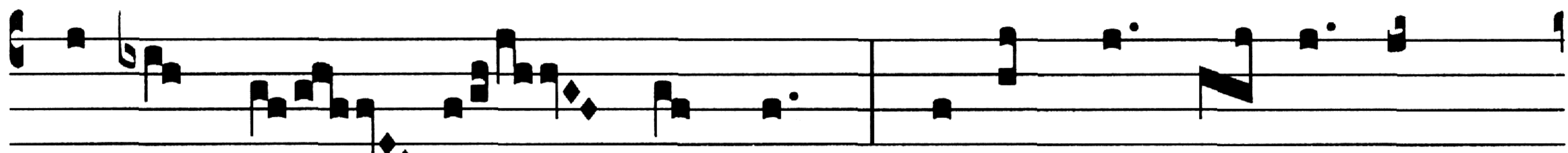
SANCTUS 212

(XI) XII. cent.

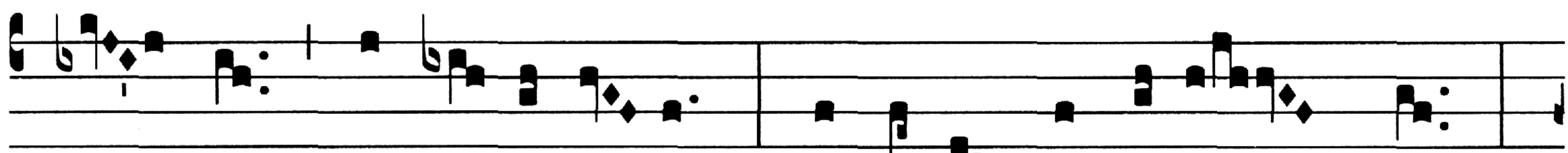
vi.



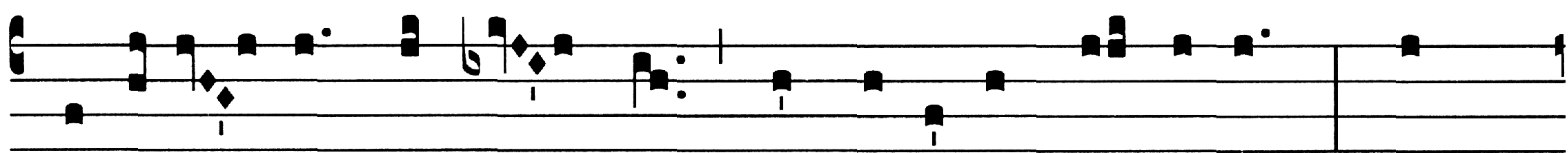
S Anc - tus, * Sanc-tus, Sanc - tus Dó - mi - nus



De - us Sá - ba - oth. Ple-ni sunt cae - li et



ter - ra gló - ri - a tu - a. Ho-sán-na in ex-cél - sis



Be-ne-díc - tus qui ve - nit in nó-mi-ne Dó - mi - ni. Ho-



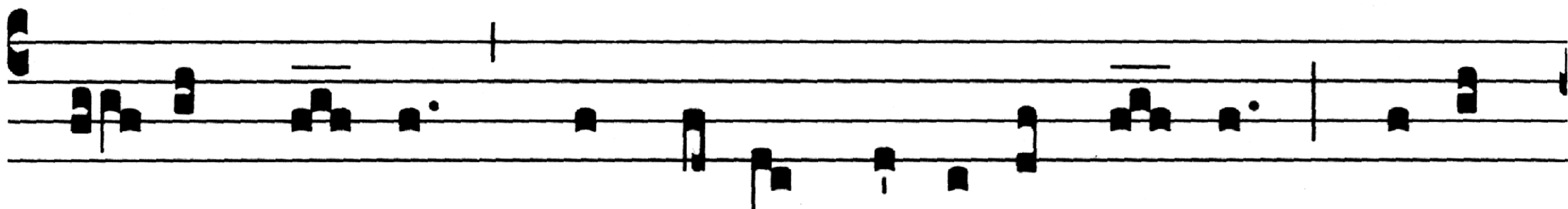
sán - na in ex-cél - sis.

213 AGNUS DEI

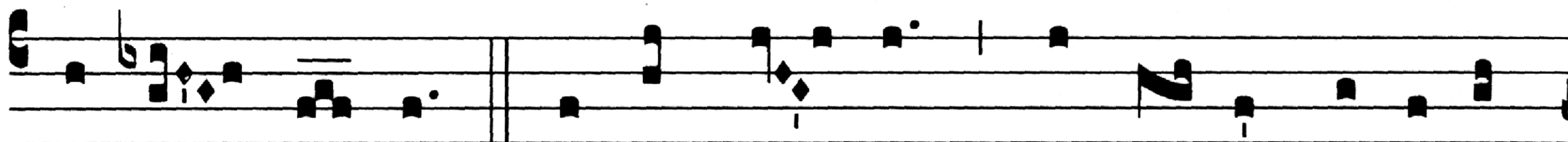
XV. cent.

VI.

A



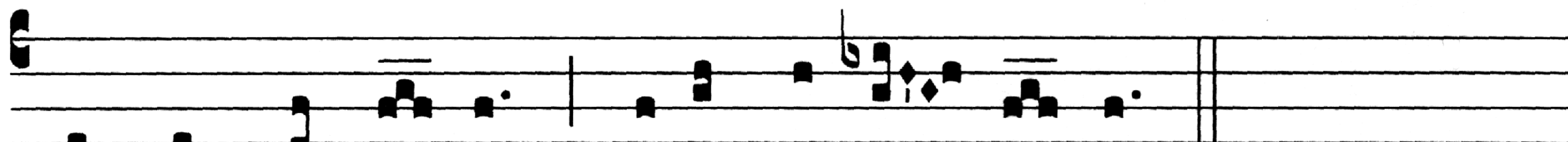
g - nus De - i, * qui tol - lis pec - cá - ta mun - di : mi - se -



ré - re no - bis. Ag - nus De - i, * qui tol - lis pec - cá - ta



mun - di : mi - se - ré - re no - bis. Ag - nus De - i, * qui tol -



lis pec - cá - ta mun - di : do - na no - bis pa - cem.